

About WFEC

Western Farmers Electric Cooperative (WFEC), a generation and transmission (G&T) cooperative, headquartered in Anadarko, Okla., was organized in 1941, when western Oklahoma distribution cooperatives found it necessary to secure an adequate power supply at rates that farmers and rural industrial developers could afford.

Throughout its history, WFEC's membership has grown to include 21 member cooperatives, plus Altus Air Force Base. These members are headquartered in Oklahoma and New Mexico.

Today, with six generating facilities, and a total combined firm capacity of over 2,500 MW, including contract power purchases, WFEC owns and maintains more than 3,800 miles of transmission line to over 330 sub and switch stations. Generating facilities are located at Mooreland, Anadarko and Hugo, Okla. and Lovington, N.M.

Plus, zero-carbon resources have also been a part of WFEC's wholesale power mix for many years, with the development and growth of wind* and solar* projects playing essential roles in providing a diversified portfolio.

In 2003, WFEC signed the state's first power purchase agreement with a wind farm developer for the energy produced from a 74 MW wind facility, being built at that time near Lawton. Since then, agreements have been signed for 13 additional wind farm projects.

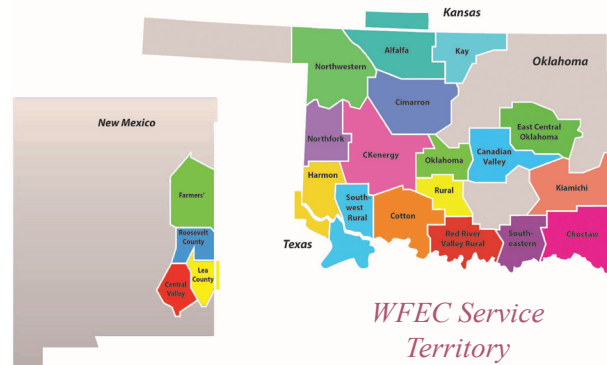
In 2016, WFEC entered into a power purchase agreement with a 25 MW solar project in New Mexico, followed up by additional solar purchases, with more projects underway.

Once these new resources are commercial, by the end of 2026, roughly half of the energy sales to WFEC members will be offset by zero carbon generating resource sales to the SPP market.

**WFEC purchases or produces energy from various wind & solar resources. However, WFEC has not historically, nor may not in the future, retain or retire all of the renewable energy certificates associated with the energy production from these facilities.*

Who We Serve

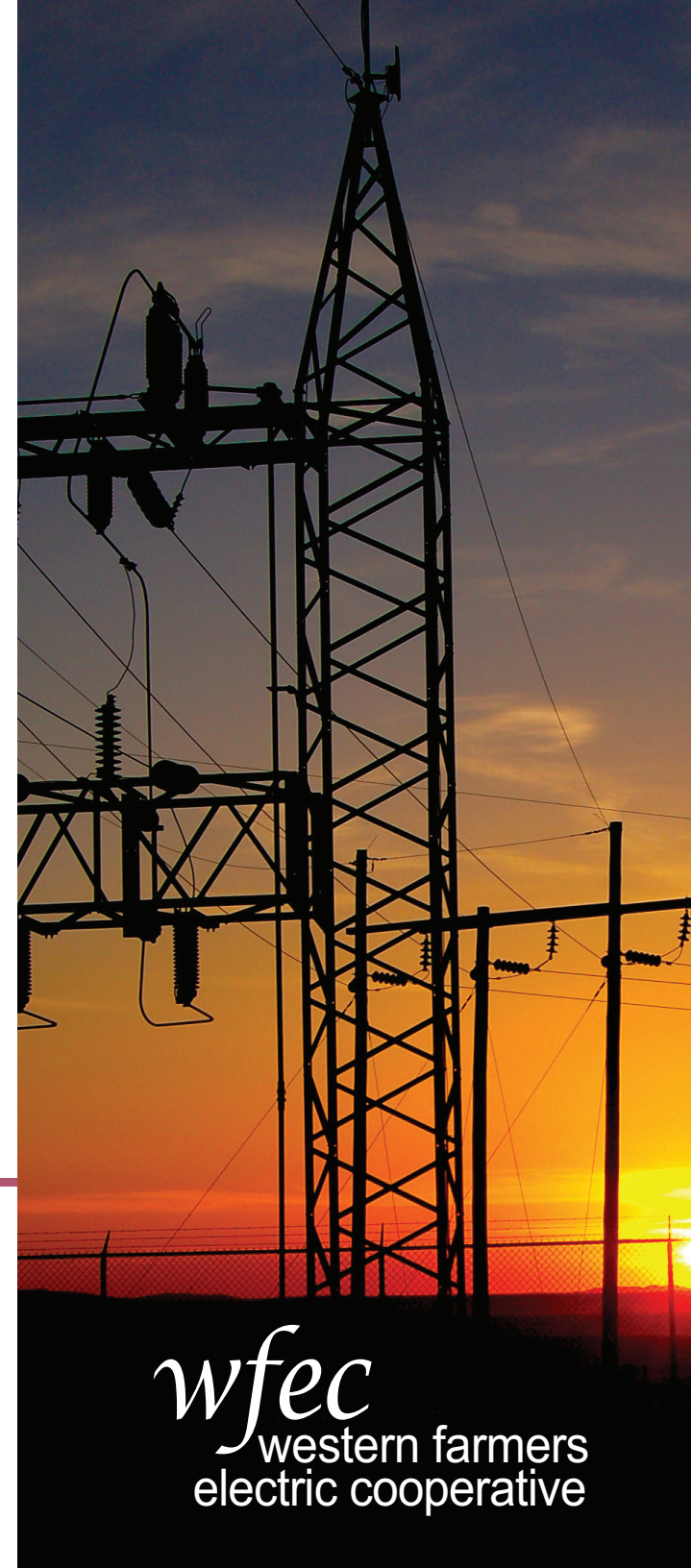
Alfalfa Electric Cooperative - Cherokee
Canadian Valley Electric Cooperative - Seminole
Central Valley Electric Cooperative - Artesia, N.M.
Choctaw Electric Cooperative - Hugo
Cimarron Electric Cooperative - Kingfisher
CKenergy Electric Cooperative - Binger
Cotton Electric Cooperative - Walters
East Central Okla. Electric Cooperative - Okmulgee
Farmers' Electric Cooperative - Clovis, N.M.
Harmon Electric Association - Hollis
Kay Electric Cooperative - Blackwell
Kiamichi Electric Cooperative - Wilburton
Lea County Electric Cooperative - Lovington, N.M.
Northfork Electric Cooperative - Sayre
Northwestern Electric Cooperative - Woodward
Oklahoma Electric Cooperative - Norman
Red River Valley Rural Electric Association - Marietta
Roosevelt Co. Electric Cooperative - Portales, N.M.
Rural Electric Cooperative - Lindsay
Southeastern Electric Cooperative - Durant
Southwest Rural Electric Association - Tipton
Altus Air Force Base - Altus



Headquarters:
701 NE 7th Street
Anadarko, OK 73005 / 405-247-3351

Moore Office:
3000 S Telephone Road
Moore, OK 73160 / 405-759-2620

www.wfec.com



wfec
western farmers
electric cooperative

Fuel Diversity

✓ Total Generating Capacity: 1,322 MW
Gas-Fired / Coal-Fired

✓ Total Power Purchases: 990 MW
Gas-Fired / Hydro / Misc. Contracts

✓ SPP Accredited Solar / Wind*: 153 MW

Total Combined Capacity: 2,351 MW

✓ Wind* PPAs: 956 MW
Oklahoma: 864 MW / New Mexico: 92 MW

✓ Solar* Projects: 83 MW
Oklahoma: 23 MW / New Mexico: 60 MW

Current/Upcoming Projects:

➤ 2026 Planned Solar Project - Oklahoma 250 MW
& Battery Storage Project 800 MWh

MW - megawatt / MWh - megawatt-hour

PPA - Power Purchase Agreement / SPP - Southwest Power Pool

Mission Statement

To honorably serve our members with reliable, competitively priced energy and related services while providing a quality work environment and being responsive to the needs of our members and the community.

WFEC is an equal opportunity provider and employer.

To file a program discrimination complaint, complete the USDA Program Discrimination Complaint Form, AD-3027, found online at http://www.ascr.usda.gov/complaint_filing_cust.html and at any USDA office or write a letter addressed to USDA and provide in the letter all of the information requested in the form. To request a copy of the complaint form, call (866) 632-9992. Submit your completed form or letter to USDA by:

(1) mail: U.S. Department of Agriculture, Office of the Assistant Secretary for Civil Rights, 1400 Independence Avenue, SW, Washington, D.C. 20250-9410; (2) fax: (202) 690-7442; or (3) email: program.intake@usda.gov

Learn More

Interested in learning more about WFEC? Check out the cooperative's corporate website at: www.wfec.com. From information on WFEC's generation and transmission assets, diverse fuel blend and energy sources to job openings, this site is a valuable reference resource.



*WFEC currently has a capability of over 80 MW of solar power from sites in Oklahoma and New Mexico. Among the solar facilities are three commercial-scale projects in New Mexico and five commercial-scale locations in Oklahoma. Also, 11 of WFEC's distribution cooperatives are involved with 13 community solar projects. Within the next few years, additional solar energy will also be added to WFEC's fuel mix.**

Types of Cooperatives

Generation & Transmission (G&T):

WFEC is a non-profit G&T cooperative that serves as the power supplier for its member-owners, consisting of 21 distribution cooperatives and Altus Air Force Base.

Distribution:

Distribution cooperatives are the foundation of the electric cooperative network. They are the direct point of contact with their respective member-owners in the delivery of electricity and other services.

What is SPP?

Overview: The Southwest Power Pool (SPP) is a regional transmission organization (RTO) granted certain responsibilities and authorities by the Federal Energy Regulatory Commission (FERC) related to ensuring the reliability of the bulk electric system on behalf of a diverse group of utilities and transmission companies in 17 states.

As an RTO, SPP is like the “air-traffic controllers” of the electric power grid. RTOs do not own the power grid; they independently operate the grid minute-by-minute to ensure that power gets to customers and to eliminate power shortages. SPP does not control or direct the use of the distribution networks that directly serve homes and businesses.

What is SPP to WFEC: Across its 17 states, SPP also acts as a balancing authority (BA) for a 14-state region, meaning they balance electricity production and use for that entire area. By consolidating this region into a single, large BA area, SPP can use its diverse fleet of hundreds of generating units with different characteristics to serve load under varying conditions across its region that extends across the country from North Dakota to Oklahoma.



*WFEC currently has power purchase agreements (PPAs) in place with 14 wind projects in Oklahoma and New Mexico. Through these PPAs, WFEC currently has over 950 MW of wind energy in its fuel portfolio.**