

Repair efforts continuing across WFEC service territory; crews making progress

Western Farmers Electric Cooperative (WFEC) crews, plus five contract crews, continued working round the clock over the weekend making repairs across WFEC's service territory. Progress was made as service was returned to three of the four substations that had been without service for several days, as a result of the massive destruction caused by an early season ice storm that affected parts of Oklahoma.

As of Monday morning, the Tuttle Substation is the only one remaining off, as Fay, Watonga and Concho substations were all energized over the weekend.

Distributed generation (DG) units are now in place at the Tuttle Substation, which will help energize that site while transmission repairs continue. WFEC crews have completed the preliminary work with the DG units, with Oklahoma Electric Cooperative (OEC) now working on the final connections.

Once OEC has completed the connection process, WFEC crews will perform a final check on the setup. Plans are to have the Tuttle Substation energized with the DG units by Tuesday afternoon. This step will allow OEC to return service to their members in this area. Some of the areas have also been backfed to help in return service to this heavily damaged area.

At this time, the best estimate of having the transmission line rebuilt and energized into the Tuttle Substation is three to four weeks. There is an estimated 19 miles of downed 138 kilovolt transmission structures and line on both sides of Tuttle. This stretch of line consists of some 142 structures, including both single transmission poles and H-structures.

With the line repairs made in other areas over the weekend by contractors and WFEC crews, it is estimated that close to 50 contractors, from three companies, are now focusing their efforts on this line.

WFEC crews are working on the other lines that are still out at this time, with damage including, broken crossarms, broken static lines and conductor, and broken structures that need to be replaced. Several lines are still sectionalized across WFEC's service territory, while these repairs are being made.

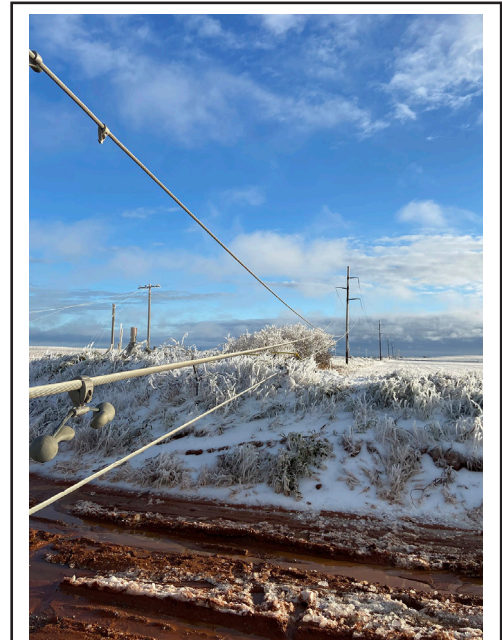
Line inspections are also continuing throughout the area, by both ground and air, as necessary.

The line sections that are still out as of Monday morning, along with estimated timeframes for repairs to be made, but are subject to change, include:

Monday repairs (might change if additional damage is found):

- Anadarko to OU - line down between Anadarko and Amber.
- Paoli to Baseline - pole grounds broken.
- Watonga to El Reno to Anadarko - broken crossarm between Watonga and Calumet.
- Watonga to El Reno to Anadarko - Minco Wind Farm line down on OG&E Red Corn tap between Cogar and El Reno junction.

continued



The heavy ice was no match for transmission structures and power lines that succumbed to the weight of the one to four inches of ice across parts of Oklahoma. Pictured above is damage along the Hydro to Eakly line, taken by Kenny Flood, a WFEC journeyman station technician.



- Anadarko to Payne to PSO Cornville – double check for minor damage, if any, between Cornville junction to Naples.
- Anadarko to Payne to PSO Cornville - four or five damaged structures between Sequoyah and Cornville junction.

Repairs expected by the end of this week, but possibly later, depending on any additional damage being found, include:

- Gotebo to Washita line - a three-pole structure down between Mt. View and Pine Ridge. One other structure also needs to be changed out between Gotebo and Mt. View.
- Anadarko to Grandfield to Snyder line - static wire broken on a three-pole structure between Cache junction and Medicine Park. This structure is on top of a mountain and the road will need to be cleared to get to the structure for repairs.
- Paoli to Stonewall - damaged switch at Oil Center and four structures with damage between Oil Center and Latta.
- Russell to West Texas Utilities (WTU) Lake Pauline - sectionalized between Eldorado and WTU Lake Pauline. No report of damage at this time, so crews or plane will need to check this line.
- Washita to PSO Clinton – line is sectionalized between Hydro and Sickles. Crews are waiting on supplies to come in for repairs, but plan to have this line closed back in by Friday, if all goes well.